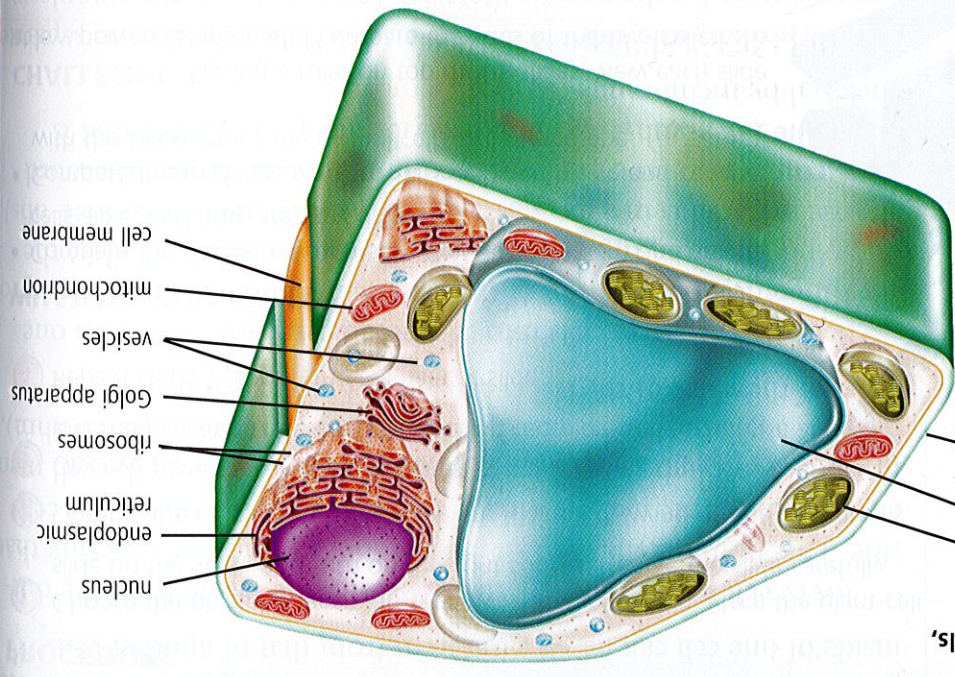


Parts of a Eukaryotic Cell

Plant Cell

Found in plant cells,  
not animal cells:

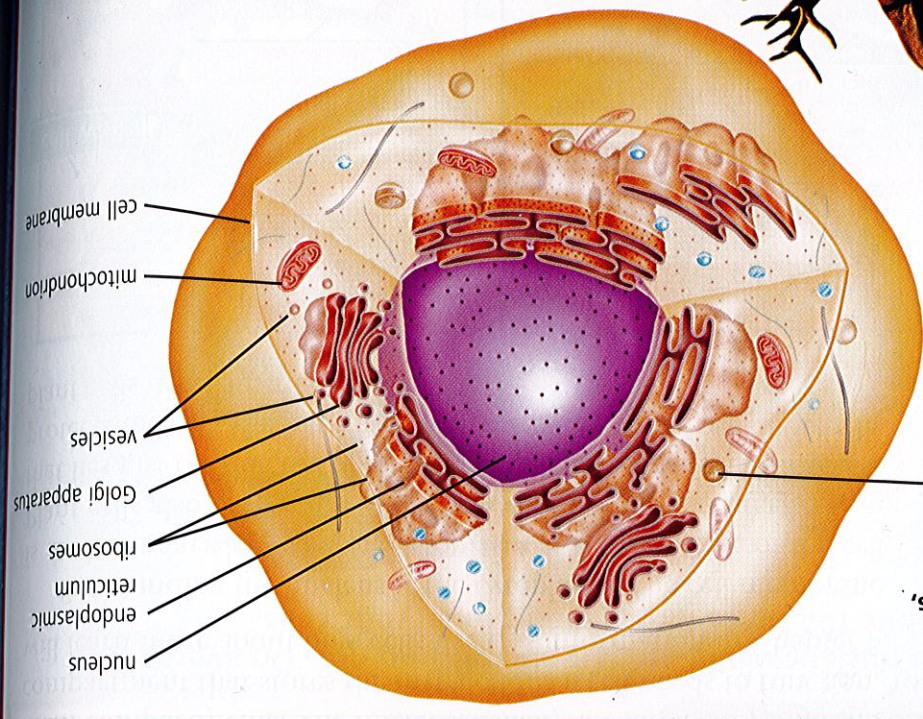


- nucleus
- endoplasmic reticulum
- ribosomes
- Golgi apparatus
- vesicles
- mitochondrion
- cell membrane



Animal Cell

Found in animal cells,  
not plant cells:



- nucleus
- endoplasmic reticulum
- ribosomes
- Golgi apparatus
- vesicles
- mitochondrion
- cell membrane

lysosome



Structures:

The nucle  
tion a cell  
ribosomes  
mic reticu  
molecules

Organelles:

No cell can  
all the activ  
Sun. Withi  
organelles i  
sugar. Plant  
cells functi  
Animal  
animals are  
Instead, ani  
an animal u  
have stored.  
eating anim

READING

Ho no

Both plan

to do work,  
eukaryotic c  
organelles th

Organelles

You know tha  
part of the sta  
grow. The job  
enter a cell is  
In the illu  
reticulum is a  
the endoplasm  
proteins. The  
membrane.