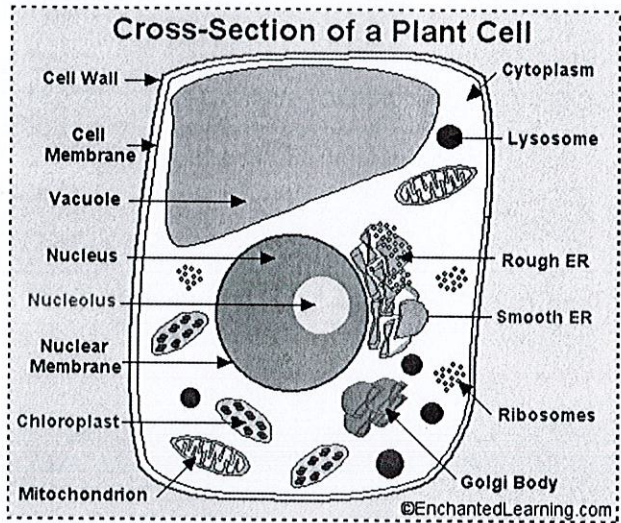


Making Analogies - Cell City

Part I



Imagine if the cell to the left was actually a small city. What role in the city would each organelle have in the workings of the city? What is the main export of this city? What businesses/people/ structures in a real city can be represented by each part of a cell? What parts of a city might the following represent? Remember, you must be able to defend your choices. Want a challenge, think of another analogy you can make other than a city. Run your idea by your teacher first and then let your imagination go!

Organelle	City Equivalent	Reason (Use complete sentences.)
Cell wall		
Plasma membrane		
Cytoplasm		
Golgi apparatus		
Endoplasmic reticulum		
Nucleus		
Centrioles		
Vacuole		
Mitochondria		
Lysosome		
Chloroplast		
Cell membrane		
Ribosomes		
Chromatin		
Proteins		
Other (optional)		
Other (optional)		